

Your electricity bill

Bill date: May 16, 2011

Summary of what you owe

	Amount owing on your previous bill	\$15.66
<i>Less</i>	Payment made on Apr 27, thank you	-\$15.66
<i>Less</i>	SurePay discount	-\$0.48
<i>Equals</i>	Your balance forward	-\$0.48
<i>Plus</i>	Your new charges (details on following pages)	
	Cost of electricity (with taxes and fees)	\$17.95
<i>Equals</i>	Total amount due	\$17.47

***We will debit your checking or savings account
for \$17.47 on May 27, 2011.***

Miguel Lombana

Your account number:

For service at:

Questions or Office Locations?

Call 602-371-7171, 24 hours a day

Website: aps.com

Para servicio en español llame al:

602-371-6861 (Phoenix)

Your electricity bill
May 16, 2011

Miguel Lombana

Your account number

Your service plan: Time Adv 7pm-Noon, EPR-6

Meter number:
Meter reading cycle: 09

Charges for electricity services

Cost of net electricity

Basic service charge	\$7.14
Delivery service charge	\$0.00
Environmental benefits surcharge	\$0.00
Federal environmental improvement surcharge	\$0.00
System benefits charge	\$0.00
Power supply adjustment*	\$0.00
Metering*	\$5.58
Meter reading*	\$1.86
Billing*	\$2.10
Generation of electricity on-peak*	\$0.00
Generation of electricity off-peak*	\$0.00
Transmission and ancillary services*	\$0.00
Transmission cost adjustment*	\$0.00
Cost of electricity you used	\$16.68

Taxes and fees

Regulatory assessment	\$0.05
State sales tax	\$1.10
County sales tax	\$0.12
City sales tax	\$0.00
Franchise fee	\$0.00
Cost of electricity with taxes and fees	\$17.95

Total charges for electricity services \$17.95

* These services are currently provided by APS but may be provided by a competitive supplier.

Amount of electricity from APS

Meter reading on May 12	15238
Meter reading on Apr 12	14200
Total electricity from APS, in kWh	1038
On-peak meter reading on May 12	2332
On-peak meter reading on Apr 12	2205
On-peak electricity from APS, in kWh	127
Off-peak electricity from APS, in kWh	911

Amount of electricity credited

Meter reading on May 12	15482
Meter reading on Apr 12	14075
Total electricity credited, in kWh	1407
On-peak meter reading on May 12	4908
On-peak meter reading on Apr 12	4458
On-peak electricity credited, in kWh	450
Off-peak electricity credited, in kWh	957
Last month's on-peak kWh credit	986
Last month's off-peak kWh credit	52

Net electricity

On-peak electricity from APS, in kWh	127
Minus on-peak electricity credited, in kWh	450
Minus last month's on-peak kWh credit	986
Net on-peak electricity, in kWh	-1309
Off-peak electricity from APS, in kWh	911
Minus off-peak electricity credited, in kWh	957
Minus last month's off-peak kWh credit	52
Net off-peak electricity, in kWh	-98

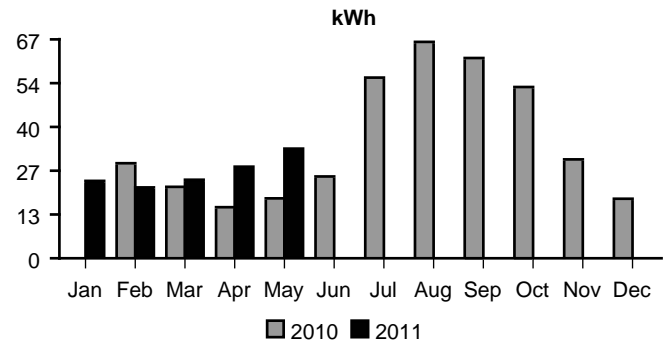


Your electricity bill
May 16, 2011

Miguel Lombana

Your account number

Average daily electricity use per month



Comparing your monthly use

	This month	Last month	This month last year
Billing days	30	29	29
Average outdoor temperature	72°	65°	69°
Your total use in kWh	1038	841	557
Your average daily cost	\$0.59	\$0.59	\$0.59