



aps.com

## Your electricity bill

Bill date: April 14, 2011

### Summary of what you owe

	Amount owing on your previous bill	-\$1.21
<i>Less</i>	Payments made through Apr 14	\$0.00
<i>Less</i>	SurePay discount	-\$0.48
<i>Equals</i>	Your balance forward	-\$1.69
<i>Plus</i>	Your new charges (details on following pages)	
	Cost of electricity (with taxes and fees)	\$17.35
<i>Equals</i>	<b>Total amount due</b>	<b>\$15.66</b>

***We will debit your checking or savings account  
for \$15.66 on April 27, 2011.***

**Miguel Lombana**

**Your account number:**

**For service at:**

#### **Questions or Office Locations?**

Call 602-371-7171, 24 hours a day

Website: [aps.com](http://aps.com)

Para servicio en español llame al:  
602-371-6861 (Phoenix)

Your electricity bill  
April 14, 2011

Miguel Lombana

Your account number

Your service plan: Time Adv 7pm-Noon, EPR-6

Meter number: L  
Meter reading cycle: 09

## Charges for electricity services

### Cost of net electricity

Basic service charge	\$6.90
Delivery service charge	\$0.00
Environmental benefits surcharge	\$0.00
Federal environmental improvement surcharge	\$0.00
System benefits charge	\$0.00
Power supply adjustment*	\$0.00
Metering*	\$5.39
Meter reading*	\$1.80
Billing*	\$2.03
Generation of electricity on-peak*	\$0.00
Generation of electricity off-peak*	\$0.00
Transmission and ancillary services*	\$0.00
Transmission cost adjustment*	\$0.00
Cost of electricity you used	\$16.12

### Taxes and fees

Regulatory assessment	\$0.05
State sales tax	\$1.07
County sales tax	\$0.11
City sales tax	\$0.00
Franchise fee	\$0.00
Cost of electricity with taxes and fees	\$17.35

**Total charges for electricity services \$17.35**

\* These services are currently provided by APS but may be provided by a competitive supplier.

### Amount of electricity from APS

Meter reading on Apr 12	14200
Meter reading on Mar 14	13359
<b>Total electricity from APS, in kWh</b>	<b>841</b>
On-peak meter reading on Apr 12	2205
On-peak meter reading on Mar 14	2114
<b>On-peak electricity from APS, in kWh</b>	<b>91</b>
<b>Off-peak electricity from APS, in kWh</b>	<b>750</b>

### Amount of electricity credited

Meter reading on Apr 12	14075
Meter reading on Mar 14	12874
<b>Total electricity credited, in kWh</b>	<b>1201</b>
On-peak meter reading on Apr 12	4458
On-peak meter reading on Mar 14	4045
<b>On-peak electricity credited, in kWh</b>	<b>413</b>
<b>Off-peak electricity credited, in kWh</b>	<b>788</b>
<b>Last month's on-peak kWh credit</b>	<b>664</b>
<b>Last month's off-peak kWh credit</b>	<b>14</b>

### Net electricity

On-peak electricity from APS, in kWh	91
Minus on-peak electricity credited, in kWh	413
Minus last month's on-peak kWh credit	664
<b>Net on-peak electricity, in kWh</b>	<b>-986</b>
Off-peak electricity from APS, in kWh	750
Minus off-peak electricity credited, in kWh	788
Minus last month's off-peak kWh credit	14
<b>Net off-peak electricity, in kWh</b>	<b>-52</b>

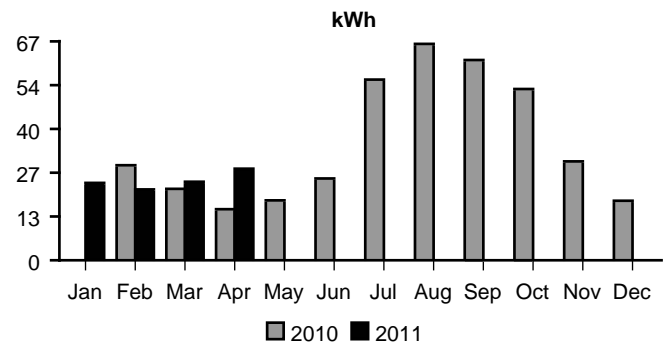


Your electricity bill  
April 14, 2011

Miguel Lombana

Your account number

### Average daily electricity use per month



### Comparing your monthly use

	This month	Last month	This month last year
Billing days	29	31	29
Average outdoor temperature	65°	58°	63°
Your total use in kWh	841	776	478
Your average daily cost	\$0.59	\$0.59	\$0.59